

PR9200 Application Note:

How to get RCP log and module information



Revision History

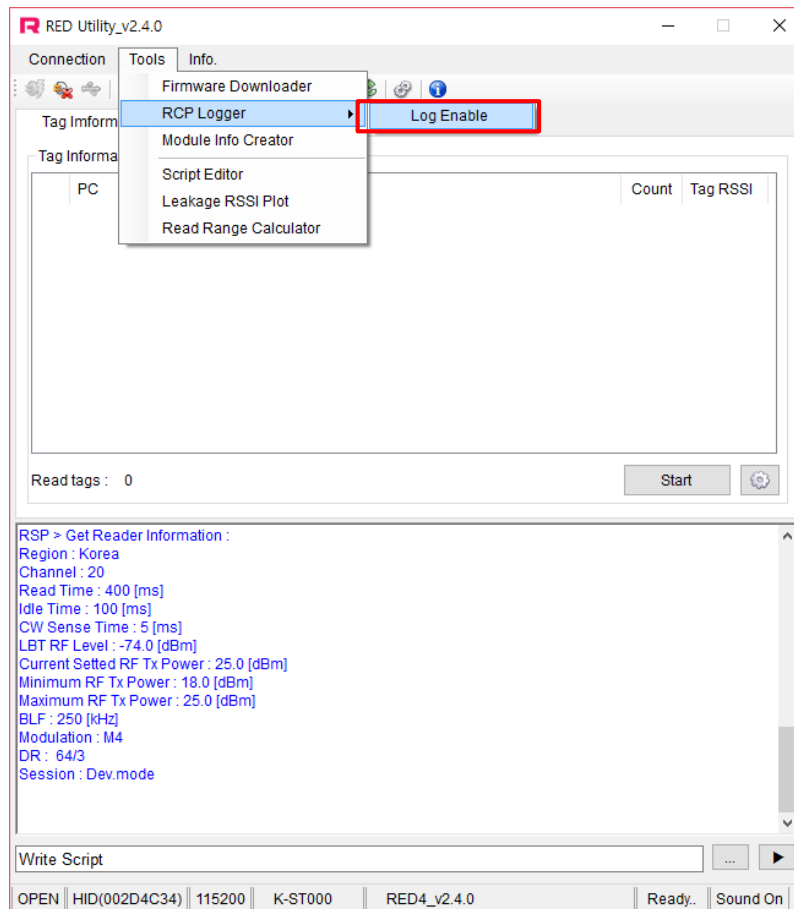
Version	Date	Description
01	2013-08-01	Initial release
02	2016-06-18	Modified some figures

Document Summary

- This document describes how to report some information to understand the problem.
 - If there are problems while using the module, please give us some information as this document

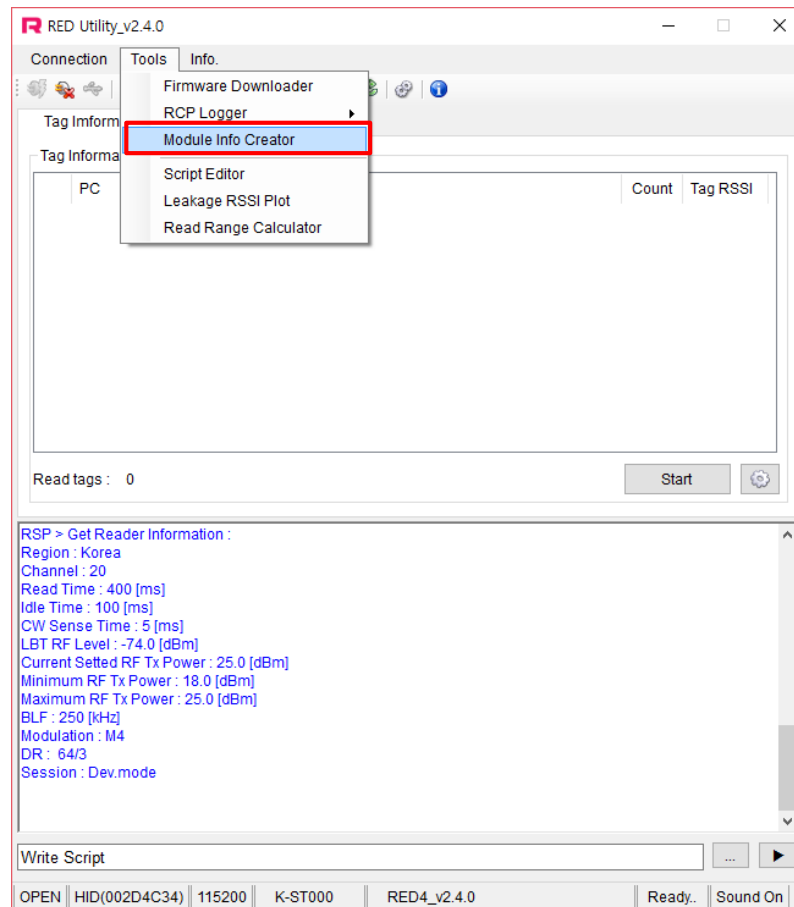
RCP Log Information

1. Click “Log Enable” and make text file (*.log) to save the RCP packet
 - ✓ After log enable, all RCP packets are saved in text file
2. Make same error situation.



Module Information

- Check module information
 - ✓ refer to below picture and send us text file(*.rpt).
 - ✓ At module operation status, activate “Module Info Creator”



Address information

PHYCHIPS Inc.

#104, 187 Techno 2-ro, Yuseong-gu, Daejeon, Korea (Yongsan-dong, Migun Technoworld 2), 305-500

Web site : <http://www.phychips.com>

E-mail : sales@phychips.com

TEL : +82-42-864-2402

FAX : +82-42-864-2403

Disclaimer: PHYCHIPS reserves the right to make changes to the information in this document without prior notice. The purchase of PHYCHIPS products does not convey any license under patent rights owned by PHYCHIPS or others. PHYCHIPS does not assume any responsibility for the use of this product. It is the customer's responsibility to make sure that the system complies with regulations.

© 2016 PHYCHIPS Inc. All rights reserved. The reproduction of this document is NOT allowed without approval of PHYCHIPS Inc.